

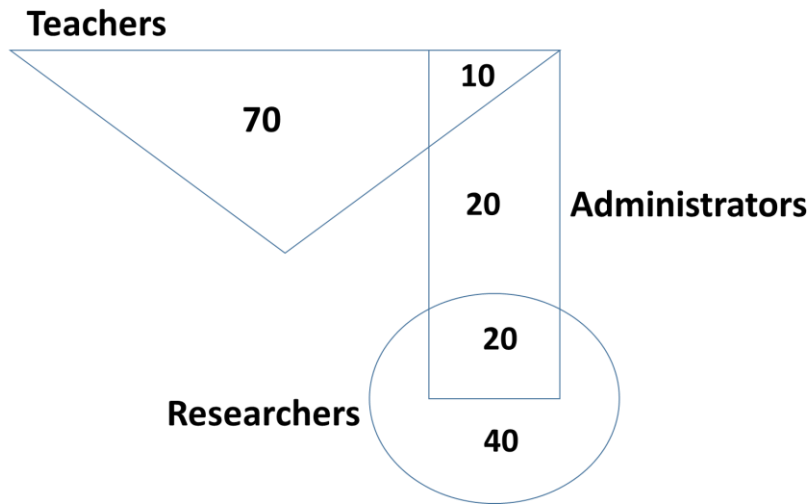
Q. 1 – Q. 5 carry one mark each.

- Q.1 The expenditure on the project _____ as follows: equipment Rs.20 lakhs, salaries Rs.12 lakhs, and contingency Rs.3 lakhs.
- (A) break down (B) break (C) breaks down (D) breaks
- Q.2 The search engine's business model _____ around the fulcrum of trust.
- (A) revolves (B) plays (C) sinks (D) bursts
- Q.3 Two cars start at the same time from the same location and go in the same direction. The speed of the first car is 50 km/h and the speed of the second car is 60 km/h. The number of hours it takes for the distance between the two cars to be 20 km is ____.
- (A) 1 (B) 2 (C) 3 (D) 6
- Q.4 Ten friends planned to share equally the cost of buying a gift for their teacher. When two of them decided not to contribute, each of the other friends had to pay Rs 150 more. The cost of the gift was Rs. ____.
- (A) 666 (B) 3000 (C) 6000 (D) 12000
- Q.5 A court is to a judge as _____ is to a teacher.
- (A) a student (B) a punishment (C) a syllabus (D) a school

Q. 6 – Q. 10 carry two marks each.

- Q.6 The police arrested four criminals – P, Q, R and S. The criminals knew each other. They made the following statements:
P says "Q committed the crime."
Q says "S committed the crime."
R says "I did not do it."
S says "What Q said about me is false."
Assume only one of the arrested four committed the crime and only one of the statements made above is true. Who committed the crime?
- (A) P (B) R (C) S (D) Q

- Q.7 In the given diagram, teachers are represented in the triangle, researchers in the circle and administrators in the rectangle. Out of the total number of the people, the percentage of administrators shall be in the range of _____.



- (A) 0 to 15 (B) 16 to 30 (C) 31 to 45 (D) 46 to 60
- Q.8 “A recent High Court judgement has sought to dispel the idea of begging as a disease — which leads to its stigmatization and criminalization — and to regard it as a symptom. The underlying disease is the failure of the state to protect citizens who fall through the social security net.”

Which one of the following statements can be inferred from the given passage?

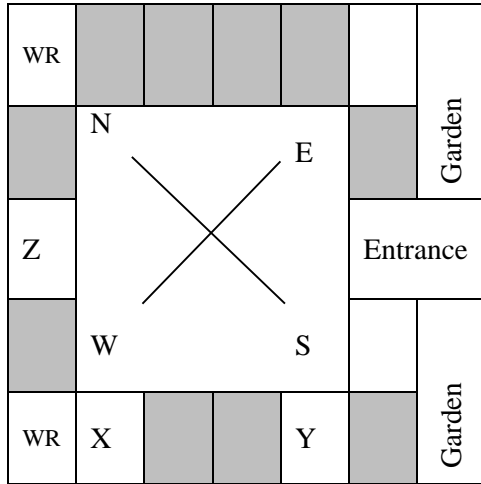
- (A) Beggars are lazy people who beg because they are unwilling to work
(B) Beggars are created because of the lack of social welfare schemes
(C) Begging is an offence that has to be dealt with firmly
(D) Begging has to be banned because it adversely affects the welfare of the state
- Q.9 In a college, there are three student clubs. Sixty students are only in the Drama club, 80 students are only in the Dance club, 30 students are only in the Maths club, 40 students are in both Drama and Dance clubs, 12 students are in both Dance and Maths clubs, 7 students are in both Drama and Maths clubs, and 2 students are in all the clubs. If 75% of the students in the college are not in any of these clubs, then the total number of students in the college is _____.

- (A) 1000 (B) 975 (C) 900 (D) 225

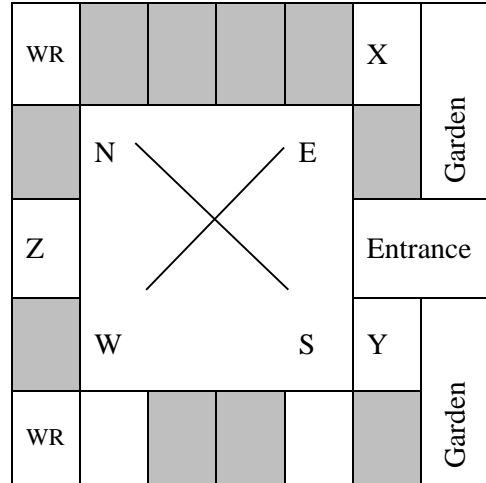
GATE 2019 General Aptitude (GA) Set-6

- Q.10 Three of the five students allocated to a hostel put in special requests to the warden. Given the floor plan of the vacant rooms, select the allocation plan that will accommodate all their requests.
- Request by X: Due to pollen allergy, I want to avoid a wing next to the garden.
- Request by Y: I want to live as far from the washrooms as possible, since I am very sensitive to smell.
- Request by Z: I believe in Vaastu and so want to stay in the South-west wing.
- The shaded rooms are already occupied. WR is washroom.

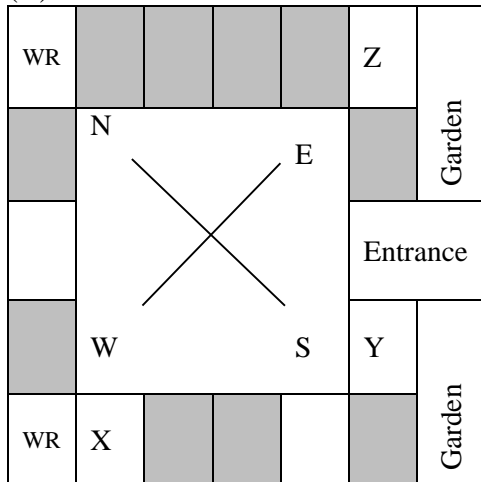
(A)



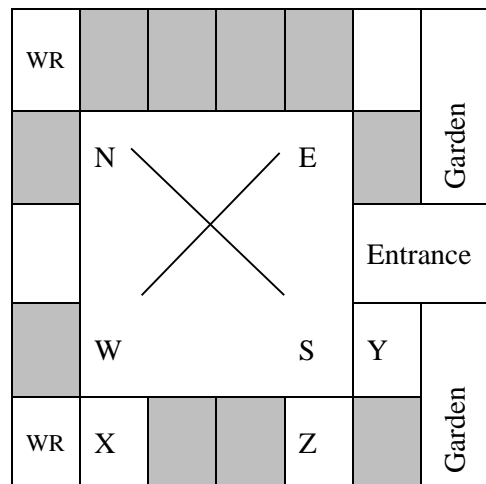
(B)



(C)



(D)



END OF THE QUESTION PAPER

Q. 1 – Q. 25 carry one mark each.

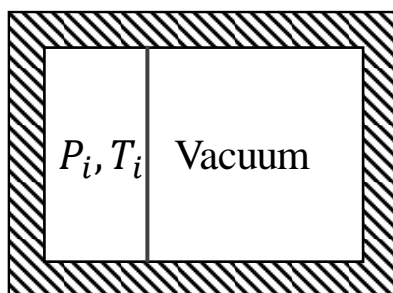
- Q.1 A system of n homogeneous linear equations containing n unknowns will have non-trivial solutions if and only if the determinant of the coefficient matrix is

(A) 1 (B) -1 (C) 0 (D) ∞

- Q.2 The value of the expression $\lim_{x \rightarrow \frac{\pi}{2}} \left| \frac{\tan x}{x} \right|$ is

(A) ∞ (B) 0 (C) 1 (D) -1

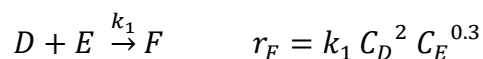
- Q.3 Consider a rigid, perfectly insulated, container partitioned into two unequal parts by a thin membrane (see figure). One part contains one mole of an ideal gas at pressure P_i and temperature T_i while the other part is evacuated. The membrane ruptures, the gas fills the entire volume and the equilibrium pressure is $P_f = P_i/4$. If C_p (molar specific heat capacity at constant pressure), C_v (molar specific heat capacity at constant volume) and R (universal gas constant) have the same units as molar entropy, the change in molar entropy ($S_f - S_i$) is



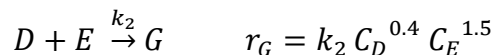
- (A) $C_p \ln 2 + R \ln 4$
 (B) $-C_v \ln 2 + R \ln 4$
 (C) $R \ln 4$
 (D) $C_p \ln 2$
- Q.4 For a single component system, vapor (subscript g) and liquid (subscript f) coexist in mechanical, thermal and phase equilibrium when
- (A) $u_g = u_f$ (equality of specific internal energy)
 (B) $h_g = h_f$ (equality of specific enthalpy)
 (C) $s_g = s_f$ (equality of specific entropy)
 (D) $g_g = g_f$ (equality of specific Gibbs free energy)

- Q.5 For a binary nonideal A-B mixture exhibiting a minimum boiling azeotrope, the activity coefficients, γ_i ($i = A, B$), must satisfy
- (A) $\gamma_A > 1, \gamma_B > 1$
(B) $\gamma_A < 1, \gamma_B > 1$
(C) $\gamma_A = 1, \gamma_B = 1$
(D) $\gamma_A < 1, \gamma_B < 1$
- Q.6 For a fully-developed turbulent hydrodynamic boundary layer for flow past a flat plate, the thickness of the boundary layer increases with distance x from the leading edge of the plate, along the free-stream flow direction, as
- (A) $x^{0.5}$ (B) $x^{1.5}$ (C) $x^{0.4}$ (D) $x^{0.8}$
- Q.7 Consider a cylinder (diameter D and length D), a sphere (diameter D) and a cube (side length D). Which of the following statements concerning the sphericity (Φ) of the above objects is true:
- (A) $\Phi_{\text{sphere}} > \Phi_{\text{cylinder}} > \Phi_{\text{cube}}$ (B) $\Phi_{\text{sphere}} = \Phi_{\text{cylinder}} = \Phi_{\text{cube}}$
(C) $\Phi_{\text{sphere}} < \Phi_{\text{cylinder}} < \Phi_{\text{cube}}$ (D) $\Phi_{\text{cylinder}} > \Phi_{\text{sphere}} = \Phi_{\text{cube}}$
- Q.8 Prandtl number signifies the ratio of
- (A) $\frac{\text{Momentum Diffusivity}}{\text{Thermal Diffusivity}}$ (B) $\frac{\text{Mass Diffusivity}}{\text{Thermal Diffusivity}}$
(C) $\frac{\text{Thermal Diffusivity}}{\text{Momentum Diffusivity}}$ (D) $\frac{\text{Thermal Diffusivity}}{\text{Mass Diffusivity}}$
- Q.9 Pool boiling equipment operating above ambient temperature is usually designed to operate
- (A) far above the critical heat flux (B) near the critical heat flux
(C) far above the Leidenfrost point (D) near the Leidenfrost point

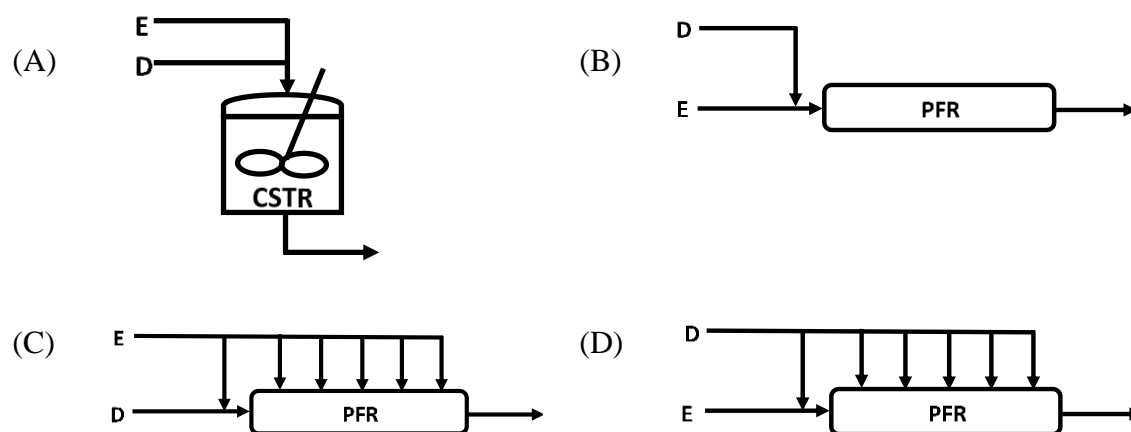
Q.10 The desired liquid-phase reaction



is accompanied by an undesired side reaction



Four isothermal reactor schemes (CSTR: ideal Continuous-Stirred Tank Reactor; PFR: ideal Plug Flow Reactor) for processing equal molar feed rates of D and E are shown in figure. Each scheme is designed for the same conversion. The scheme that gives the most favorable product distribution is:



Q.11 For a first order reaction in a porous spherical catalyst pellet, diffusional effects are most likely to lower the observed rate of reaction for

- (A) slow reaction in a pellet of small diameter
- (B) slow reaction in a pellet of large diameter
- (C) fast reaction in a pellet of small diameter
- (D) fast reaction in a pellet of large diameter

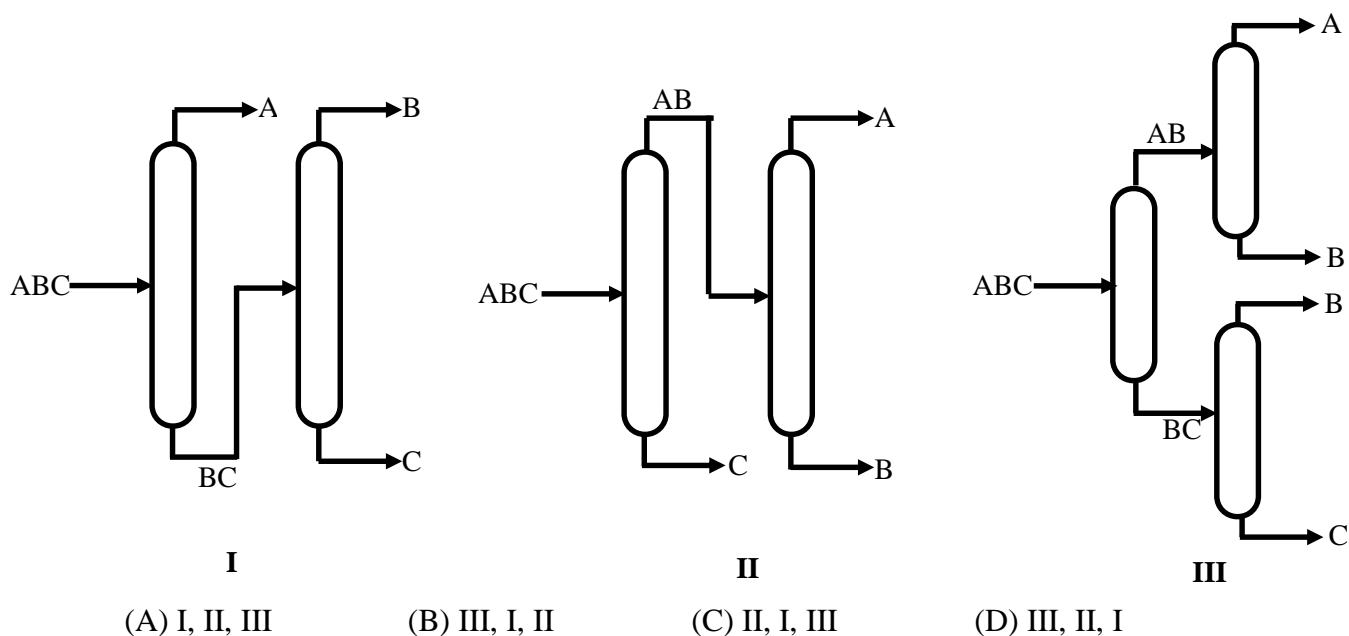
Q.12 A thermocouple senses temperature based on the

- (A) Nernst Effect
- (B) Maxwell Effect
- (C) Seebeck Effect
- (D) Peltier Effect

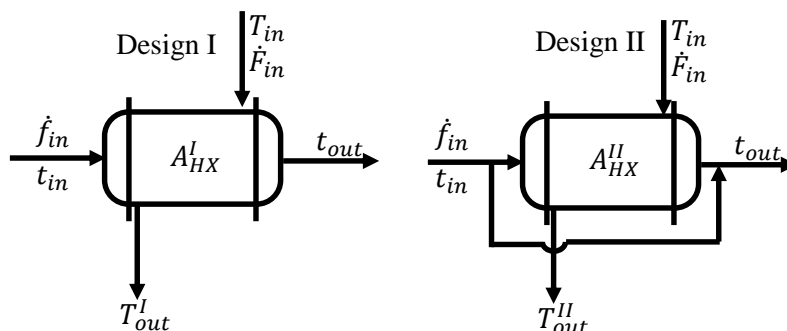
Q.13 The correct expression for the Colburn j -factor for mass transfer that relates Sherwood number (Sh), Reynolds number (Re) and Schmidt number (Sc) is

- (A) $\frac{Sh}{(Re)(Sc)^{1/3}}$
- (B) $\frac{Sh}{(Re)^{1/2}(Sc)}$
- (C) $\frac{Sh}{(Re)^{1/2}(Sc)^{1/3}}$
- (D) $\frac{Sh}{(Re)(Sc)}$

- Q.14 In the drying of non-dissolving solids at constant drying conditions, the internal movement of moisture in the solid has a dominant effect on the drying rate during
- (A) the initial adjustment period only
 - (B) the constant rate period only
 - (C) the falling rate period only
 - (D) both the initial adjustment and constant rate periods
- Q.15 Three distillation schemes for separating an equimolar, constant relative volatility ABC mixture into nearly pure components are shown. The usual simplifying assumptions such as constant molal overflow, negligible heat loss, ideal trays are valid. All the schemes are designed for minimum total reboiler duty. Given that the relative volatilities are in the ratio $\alpha_A : \alpha_B : \alpha_C \equiv 8:2:1$, the correct option that arranges the optimally-designed schemes in ascending order of total reboiler duty is



- Q.16 Consider the two countercurrent heat exchanger designs for heating a cold stream from t_{in} to t_{out} , as shown in figure. The hot process stream is available at T_{in} . The inlet stream conditions and overall heat transfer coefficients are identical in both the designs. The heat transfer area in Design I and Design II are respectively A_{HX}^I and A_{HX}^{II}



If heat losses are neglected, and if both the designs are feasible, which of the following statements holds true:

- (A) $A_{HX}^I > A_{HX}^{II}$ $T_{out}^I < T_{out}^{II}$
 (B) $A_{HX}^I = A_{HX}^{II}$ $T_{out}^I = T_{out}^{II}$
 (C) $A_{HX}^I < A_{HX}^{II}$ $T_{out}^I > T_{out}^{II}$
 (D) $A_{HX}^I < A_{HX}^{II}$ $T_{out}^I = T_{out}^{II}$
- Q.17 Producer gas is obtained by
- (A) passing air through red hot coke
 (B) thermal cracking of naphtha
 (C) passing steam through red hot coke
 (D) passing air and steam through red hot coke
- Q.18 In Kraft process, the essential chemical reagents used in the digester are
- (A) caustic soda, mercaptans and ethylene oxide
 (B) caustic soda, sodium sulphide and soda ash
 (C) quick lime, salt cake and dimethyl sulphide
 (D) baking soda, sodium sulphide and mercaptans
- Q.19 The most common catalyst used for oxidation of *o*-xylene to phthalic anhydride is
- (A) V_2O_5
 (B) Pd
 (C) Pt
 (D) Ag

Q.20 In petroleum refining operations, the process used for converting paraffins and naphthenes to aromatics is

- (A) alkylation
- (B) catalytic reforming
- (C) hydrocracking
- (D) isomerization

Q.21 The combination that correctly matches the polymer in Group-1 with the polymerization reaction type in Group-2 is

Group-1

- P) Nylon 6
- Q) Polypropylene
- R) Polyester

- (A) P-II, Q-I, R-III
- (C) P-III, Q-II, R-I

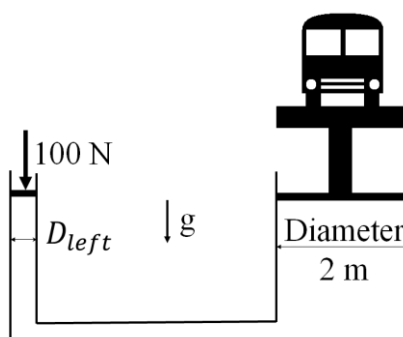
Group-2

- I) Condensation polymerization
- II) Ring opening polymerization
- III) Addition polymerization

- (B) P-I, Q-III, R-II
- (D) P-II, Q-III, R-I

Q.22 The product of the eigenvalues of the matrix $\begin{pmatrix} 2 & 3 \\ 0 & 7 \end{pmatrix}$ is _____ (rounded off to one decimal place).

Q.23 For a hydraulic lift with dimensions shown in figure, assuming $g = 10 \text{ m/s}^2$, the maximum diameter D_{left} (in m) that lifts a vehicle of mass 1000 kg using a force of 100 N is _____ (rounded off to two decimal places).



Q.24 The liquid flow rate through an equal percentage control valve, when fully open, is 150 gal/min and the corresponding pressure drop is 50 psi. If the specific gravity of the liquid is 0.8, then the valve coefficient, C_V , in $\text{gal}/(\text{min psi}^{0.5})$ is _____ (rounded off to two decimal places).

- Q.25 Consider a sealed rigid bottle containing CO_2 and H_2O at 10 bar and ambient temperature. Assume that the gas phase in the bottle is pure CO_2 and follows the ideal gas law. The liquid phase in the bottle contains CO_2 dissolved in H_2O and is an ideal solution. The Henry's constant at the system pressure and temperature is $\mathcal{H}_{\text{CO}_2} = 1000$ bar. The equilibrium mole fraction of CO_2 dissolved in H_2O is _____ (rounded off to three decimal places).

Q. 26 – Q. 55 carry two marks each.

Q.26 The solution of the ordinary differential equation

$$\frac{dy}{dx} + 3y = 1, \text{ subject to the initial condition } y = 1 \text{ at } x = 0, \text{ is}$$

- (A) $\frac{1}{3}(1 + 2e^{-x/3})$ (B) $\frac{1}{3}(5 - 2e^{-x/3})$
(C) $\frac{1}{3}(5 - 2e^{-3x})$ (D) $\frac{1}{3}(1 + 2e^{-3x})$

Q.27 The value of the complex number $i^{-1/2}$ (where $i = \sqrt{-1}$) is

- (A) $\frac{1}{\sqrt{2}}(1 - i)$ (B) $-\frac{1}{\sqrt{2}}i$ (C) $\frac{1}{\sqrt{2}}i$ (D) $\frac{1}{\sqrt{2}}(1 + i)$

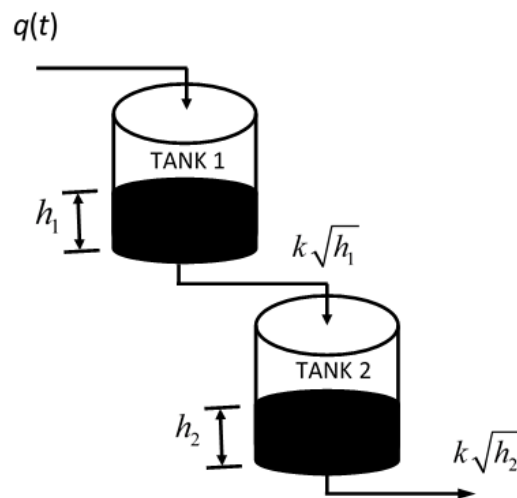
Q.28 An incompressible Newtonian fluid flows in a pipe of diameter D_1 at volumetric flow rate Q . Fluid with same properties flows in another pipe of diameter $D_2 = D_1 / 2$ at the same flow rate Q . The transition length required for achieving fully-developed flow is l_1 for the tube of diameter D_1 , while it is l_2 for the tube of diameter D_2 . Assuming steady laminar flow in both cases, the ratio l_1/l_2 is:

- (A) 1/4 (B) 1 (C) 2 (D) 4

Q.29 A disk turbine is used to stir a liquid in a baffled tank. To design the agitator, experiments are performed in a lab-scale model with a turbine diameter of 0.05 m and a turbine impeller speed of 600 rpm. The liquid viscosity is 0.001 Pa s while the liquid density is 1000 kg/m³. The actual application has a turbine diameter of 0.5 m, an impeller speed of 600 rpm, a liquid viscosity of 0.1 Pa s and a liquid density of 1000 kg/m³. The effect of gravity is negligible. If the power required in the lab-scale model is P_1 and the estimated power for the actual application is P_2 , then the ratio P_2/P_1 is

- (A) 10^3 (B) 10^4 (C) 10^5 (D) 10^6

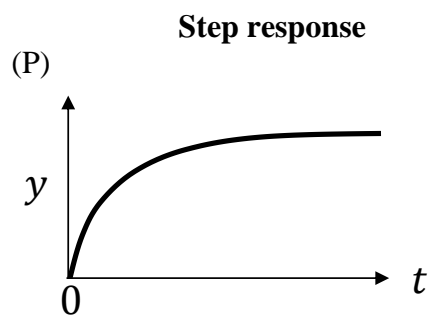
- Q.30 Consider two non-interacting tanks-in-series as shown in figure. Water enters TANK 1 at q cm^3/s and drains down to TANK 2 by gravity at a rate $k\sqrt{h_1}$ (cm^3/s). Similarly, water drains from TANK 2 by gravity at a rate of $k\sqrt{h_2}$ (cm^3/s) where h_1 and h_2 represent levels of TANK 1 and TANK 2, respectively (see figure). Drain valve constant $k = 4 \text{ cm}^{2.5}/\text{s}$ and cross-sectional areas of the two tanks are $A_1 = A_2 = 28 \text{ cm}^2$.



At steady state operation, the water inlet flow rate is $q_{ss} = 16 \text{ cm}^3/\text{s}$. The transfer function relating the deviation variables \tilde{h}_2 (cm) to flow rate \tilde{q} (cm^3/s) is,

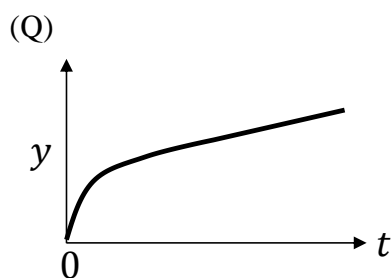
- (A) $\frac{2}{(56s+1)^2}$ (B) $\frac{2}{(62s+1)^2}$ (C) $\frac{2}{(36s+1)^2}$ (D) $\frac{2}{(49s+1)^2}$

Q.31 Choose the option that correctly matches the step response curves on the left with the appropriate transfer functions on the right. The step input change occurs at time $t=0$.



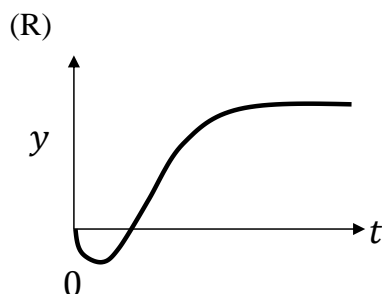
(I)

$$\frac{K(\xi s + 1)}{s(\tau s + 1)} \quad K > 0, \xi > 0, \tau > 0$$



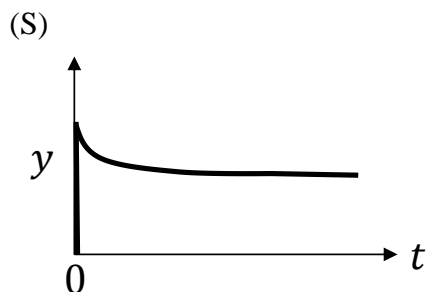
(II)

$$\frac{K(\xi s + 1)}{(\tau s + 1)} \quad K > 0, \xi > \tau > 0$$



(III)

$$\frac{K}{(\tau s + 1)} \quad K > 0, \tau > 0$$



(IV)

$$\frac{K(\xi s + 1)}{(\tau_1 s + 1)(\tau_2 s + 1)} \quad K > 0, \xi < 0$$

$$\tau_1 > 0, \tau_2 > 0$$

- (A) P – III, Q – IV; R – II, S – I
(C) P – IV, Q – III; R – II, S – I

- (B) P – III, Q – I; R – IV, S – II
(D) P – III, Q – II; R – IV, S – I

Q.32 100 kg of a feed containing 50 wt.% of a solute C is contacted with 80 kg of a solvent containing 0.5 wt.% of C in a mixer-settler unit. From this operation, the resultant extract and raffinate phases contain 40 wt.% and 20 wt.% of C, respectively. If E and R denote the mass of the extract and raffinate phases, respectively, the ratio E/R is

- (A) 1/4 (B) 1/2 (C) 2/3 (D) 1

Q.33 The combination that correctly matches the process in Group-1 with the entries in Group-2 is

Group-1

- P) Wulff process
Q) Sulfite process
R) Solvay process
S) Frasch process

Group-2

- I) Sulfur mining
II) Soda ash production
III) Acetylene production
IV) Pulp production

- (A) P-II, Q-IV, R-III, S-I
(C) P-IV, Q-I, R-II, S-III

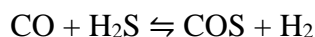
- (B) P-III, Q-IV, R-II, S-I
(D) P-II, Q-I, R-IV, S-III

Q.34 If x , y and z are directions in a Cartesian coordinate system and \mathbf{i} , \mathbf{j} and \mathbf{k} are the respective unit vectors, the directional derivative of the function $u(x, y, z) = x^2 - 3yz$ at the point $(2, 0, -4)$ in the direction $(\mathbf{i} + \mathbf{j} - 2\mathbf{k})/\sqrt{6}$ is _____ (rounded off to two decimal places).

Q.35 Two unbiased dice are thrown. Each dice can show any number between 1 and 6. The probability that the sum of the outcomes of the two dice is divisible by 4 is _____ (rounded off to two decimal places).

Q.36 The Newton-Raphson method is used to determine the root of the equation $f(x) = e^{-x} - x$. If the initial guess for the root is 0, the estimate of the root after two iterations is _____ (rounded off to three decimal places).

Q.37 Carbon monoxide (CO) reacts with hydrogen sulphide (H_2S) at a constant temperature of 800 K and a constant pressure of 2 bar as:



The Gibbs free energy of the reaction $\Delta g^\circ_{rxn} = 22972.3 \text{ J/mol}$ and universal gas constant $R = 8.314 \text{ J/(mol K)}$. Both the reactants and products can be assumed to be ideal gases. If initially only 4 mol of H_2S and 1 mol of CO are present, the extent of the reaction (in mol) at equilibrium is _____ (rounded off to two decimal places).

Q.38 For a given binary system at constant temperature and pressure, the molar volume (in m^3/mol) is given by: $v = 30x_A + 20x_B + x_Ax_B(15x_A - 7x_B)$, where x_A and x_B are the mole fractions of components A and B, respectively. The volume change of mixing Δv_{mix} (in m^3/mol) at $x_A = 0.5$ is _____ (rounded off to one decimal place).

Q.39 Consider a vessel containing steam at 180°C . The initial steam quality is 0.5 and the initial volume of the vessel is 1 m^3 . The vessel loses heat at a constant rate \dot{q} under isobaric conditions so that the quality of steam reduces to 0.1 after 10 hours. The thermodynamic properties of water at 180°C are (subscript g : vapor phase; subscript f : liquid phase):

specific volume: $v_g = 0.19405 \text{ m}^3/\text{kg}$, $v_f = 0.001127 \text{ m}^3/\text{kg}$;

specific internal energy: $u_g = 2583.7 \text{ kJ/kg}$, $u_f = 762.08 \text{ kJ/kg}$;

specific enthalpy: $h_g = 2778.2 \text{ kJ/kg}$, $h_f = 763.21 \text{ kJ/kg}$.

The rate of heat loss \dot{q} (in kJ/hour) is _____ (rounded off to the nearest integer).

Q.40 A fractionator recovers 95 mol % n -propane as the distillate from an equimolar mixture of n -propane and n -butane. The condensate is a saturated liquid at 55°C . The Antoine equation is of the form, $\ln(P^{\text{sat}} [\text{in bar}]) = A - \frac{B}{T [\text{in K}] + C}$, and the constants are provided below:

	A	B	C
n -propane	9.1058	1872.46	-25.16
n -butane	9.0580	2154.90	-34.42

Assuming Raoult's law, the condenser pressure (in bar) is _____ (rounded off to one decimal place).

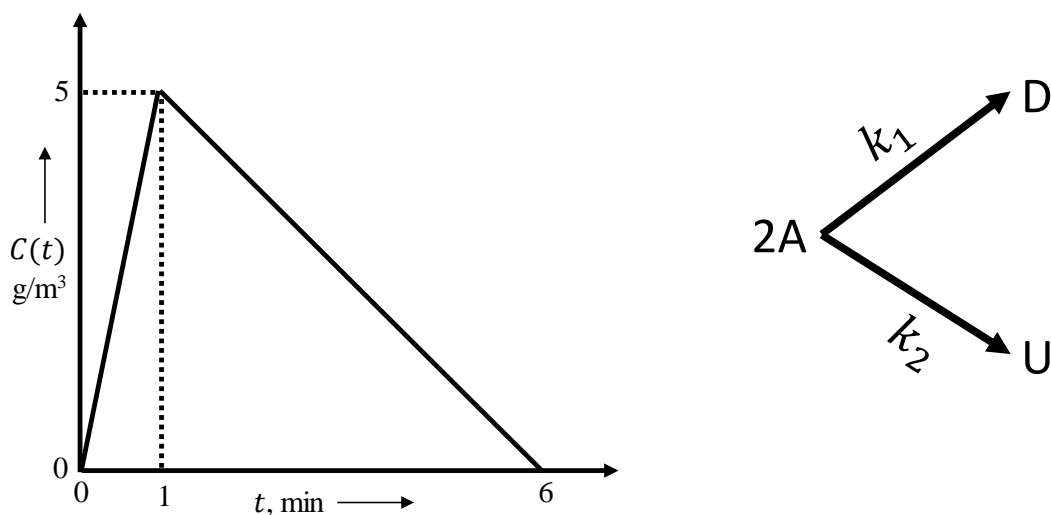
Q.41 A centrifugal pump is used to pump water (density 1000 kg/m^3) from an inlet pressure of 10^5 Pa to an exit pressure of $2 \times 10^5 \text{ Pa}$. The exit is at an elevation of 10 m above the pump. The average velocity of the fluid is 10 m/s. The cross-sectional area of the pipes at the pump inlet and outlet is 10^{-3} m^2 and acceleration due to gravity is $g = 10 \text{ m/s}^2$. Neglecting losses in the system, the power (in Watts) delivered by the pump is _____ (rounded off to the nearest integer).

Q.42 A solid sphere of radius 1 cm and initial temperature of 25°C is exposed to a gas stream at 100°C . For the solid sphere, the density is 10^4 kg/m^3 and the specific heat capacity is 500 J/(kg K) . The density of the gas is 0.6 kg/m^3 and its specific heat capacity is 10^3 J/(kg K) . The solid sphere is approximated as a lumped system (Biot number $\ll 1$) and all specific heats are constant. If the heat transfer coefficient between the solid and gas is $50 \text{ W/(m}^2 \text{ K)}$, the time (in seconds) needed for the sphere to reach 95°C is _____ (rounded off to the nearest integer)

- Q.43 Stream A with specific heat capacity $C_{PA} = 2000 \text{ J/(kg K)}$ is cooled from 90°C to 45°C in a concentric double pipe counter current heat exchanger having a heat transfer area of 8 m^2 . The cold stream B of specific heat capacity $C_{PB} = 1000 \text{ J/(kg K)}$ enters the exchanger at a flow rate 1 kg/s and 40°C . The overall heat transfer coefficient $U = 250 \text{ W/(m}^2 \text{ K)}$. Assume that the mean driving force is based on the arithmetic mean temperature difference, that is,
- $$[\Delta T]_{AMTD} = \left(\frac{T_{A,in} + T_{A,out}}{2} \right) - \left(\frac{T_{B,in} + T_{B,out}}{2} \right)$$
- where $T_{i,in}$ and $T_{i,out}$ refer to the temperature of the i^{th} stream ($i = A, B$) at the inlet and exit, respectively. The mass flow rate of stream A (in kg/s), is _____ (rounded off to two decimal places).

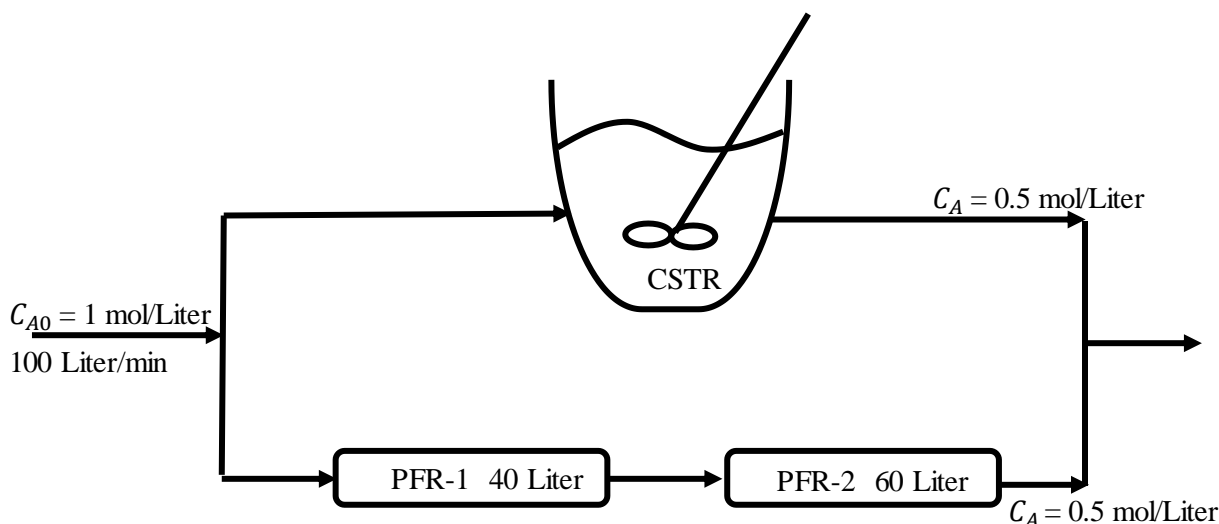
- Q.44 A 20 cm diameter cylindrical solid pellet of a nuclear fuel with density 6000 kg/m^3 and conductivity of 300 W/(m K) generates heat by nuclear fission at a spatially uniform rate of 10^4 W/kg . The heat from the fuel pellet is transferred to the surrounding coolant by convection such that the pellet wall temperature remains constant at 300°C . Neglecting the axial and azimuthal dependence, the maximum temperature (in $^\circ\text{C}$) in the pellet at steady state is _____ (rounded off to the nearest integer).

- Q.45 The elementary, irreversible, liquid-phase, parallel reactions, $2A \rightarrow D$ and $2A \rightarrow U$, take place in an isothermal non-ideal reactor. The C-curve measured in a tracer experiment is shown in the figure, where $C(t)$ is the concentration of the tracer in g/m^3 at the reactor exit at time t (in min).

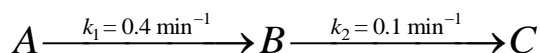


The rate constants are $k_1 = 0.2 \text{ Liter/(mol min)}$ and $k_2 = 0.3 \text{ Liter/(mol min)}$. Pure A is fed to the reactor at a concentration of 2 mol/Liter . Using the segregated model, the percentage conversion in the reactor is _____ (rounded off to the nearest integer).

- Q.46 A first-order irreversible liquid phase reaction $A \rightarrow B$ ($k = 0.1 \text{ min}^{-1}$) is carried out under isothermal, steady state conditions in the following reactor arrangement comprising an ideal CSTR (Continuous-Stirred Tank Reactor) and two ideal PFRs (Plug Flow Reactors). From the information in the figure, the volume of the CSTR (in Liters) is _____ (rounded off to the nearest integer).



- Q.47 The elementary liquid-phase irreversible reactions



take place in an isothermal ideal CSTR (Continuous-Stirred Tank Reactor). Pure A is fed to the reactor at a concentration of 2 mol/Liter. For the residence time that maximizes the exit concentration of B, the percentage yield of B, defined as $\left(\frac{\text{net formation rate of B}}{\text{consumption rate of A}} \times 100 \right)$, is _____ (rounded off to the nearest integer).

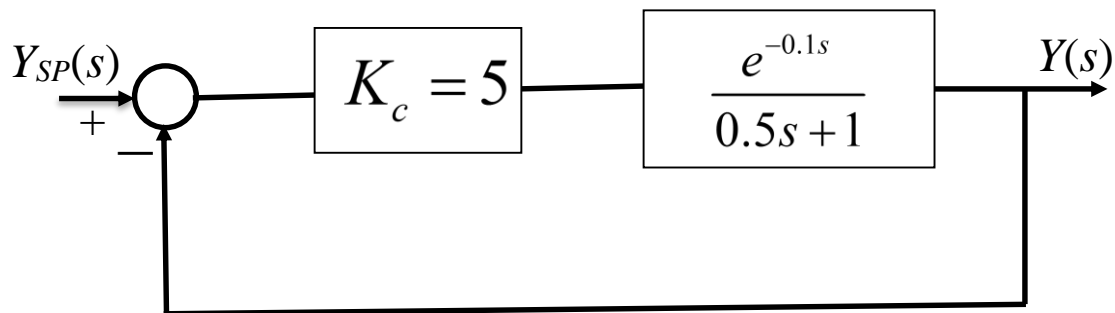
- Q.48 The elementary irreversible gas-phase reaction $A \rightarrow B + C$ is carried out adiabatically in an ideal CSTR (Continuous-Stirred Tank Reactor) operating at 10 atm. Pure A enters the CSTR at a flow rate of 10 mol/s and a temperature of 450 K. Assume A, B and C to be ideal gases. The specific heat capacity at constant pressure (C_{pi}) and heat of formation (H_i^0), of component i ($i = A, B, C$), are:

$$C_{pA} = 30 \text{ J/(mol K)} \quad C_{pB} = 10 \text{ J/(mol K)} \quad C_{pC} = 20 \text{ J/(mol K)}$$

$$H_A^0 = -90 \text{ kJ/mol} \quad H_B^0 = -54 \text{ kJ/mol} \quad H_C^0 = -45 \text{ kJ/mol}$$

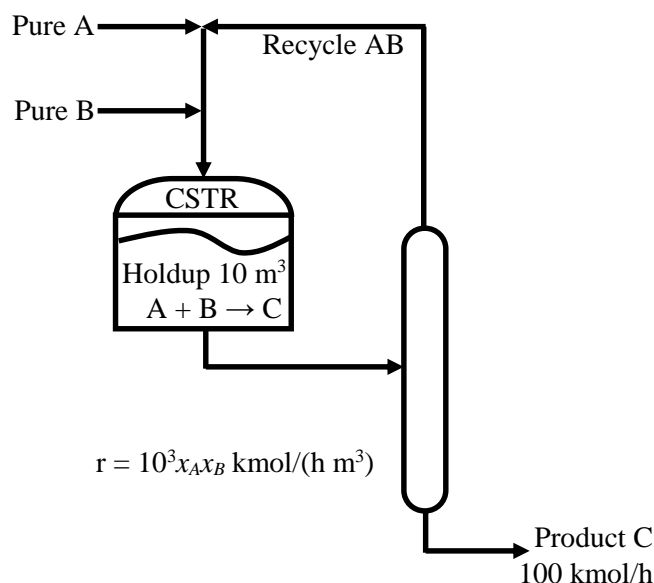
The reaction rate constant k (per second) $= 0.133 \exp \left\{ \frac{E}{R} \left(\frac{1}{450} - \frac{1}{T} \right) \right\}$, where $E = 31.4 \text{ kJ/mol}$ and universal gas constant $R = 0.082 \text{ L atm/(mol K)} = 8.314 \text{ J/(mol K)}$. The shaft work may be neglected in the analysis, and specific heat capacities do not vary with temperature. All heats of formation are referenced to 273 K. The reactor volume (in Liters) for 75% conversion is _____ (rounded off to the nearest integer).

- Q.49 For the closed loop system shown in figure, the phase margin (in degrees) is _____ (rounded off to one decimal place).



- Q.50 Two spherical camphor particles of radii 20 cm and 5 cm, far away from each other, are undergoing sublimation in a stream of air. The mass transfer coefficient is proportional to $1/\sqrt{r(t)}$, where $r(t)$ is the radius of the sphere at time t . Assume that the partial pressure of camphor far away from the surface of the particle is zero. Also, assume quasi-steady state, identical ambient conditions, and negligible heat effects. If t_1 and t_2 are the times required for complete sublimation of the 20 cm and 5 cm camphor particles, respectively, the ratio t_1/t_2 is _____ (rounded off to one decimal place).
- Q.51 A countercurrent absorption tower is designed to remove 95% of component A from an incoming binary gas mixture using pure solvent B. The mole ratio of A in the inlet gas is 0.02. The carrier gas flow rate is 50 kmol/h. The equilibrium relation is given by $Y = 2X$, where Y and X are the mole ratios of A in the gas and liquid phases, respectively. If the tower is operated at twice the minimum solvent flow rate, the mole ratio of A in the exit liquid stream is _____ (rounded off to three decimal places).
- Q.52 A binary mixture with components A and B is to be separated in a distillation column to obtain 95 mol% A as the top product. The binary mixture has a constant relative volatility $\alpha_{AB} = 2$. The column feed is a saturated liquid containing 50 mol% A. Under the usual simplifying assumptions such as constant molal overflow, negligible heat loss, ideal trays, the minimum reflux ratio for this separation is _____ (rounded off to one decimal place).

- Q.53 Consider the reactor-separator-recycle process operating under steady state conditions as shown in the figure. The reactor is an ideal Continuous-Stirred Tank Reactor (CSTR), where the reaction $A + B \rightarrow C$ occurs. Assume that there is no impurity in the product and recycle streams. Other relevant information are provided in the figure. The mole fraction of B (x_B) in the reactor that minimizes the recycle rate is _____ (rounded off to two decimal places).



- Q.54 Consider two competing equipment A and B. For a compound interest rate of 10% per annum, in order for equipment B to be the economically cheaper option, its minimum life (in years) is _____ (rounded off to the next higher integer).

Equipment	Capital Cost (Rs)	Yearly Operating Cost (Rs)	Equipment Life (Years)
A	80,000	20,000	4
B	1,60,000	15,000	?

- Q.55 A taxi-car is bought for Rs 10 lakhs. Its salvage value is zero. The expected yearly income after paying all expenses and applicable taxes is Rs 3 lakhs. The compound interest rate is 9% per annum. The discounted payback period (in years), is _____ (rounded off to the next higher integer).

END OF THE QUESTION PAPER

Q.No.	Type	Section	Key	Marks
1	MCQ	GA	C	1
2	MCQ	GA	A	1
3	MCQ	GA	B	1
4	MCQ	GA	C	1
5	MCQ	GA	D	1
6	MCQ	GA	B	2
7	MCQ	GA	C	2
8	MCQ	GA	B	2
9	MCQ	GA	C	2
10	MCQ	GA	D	2
1	MCQ	CH	C	1
2	MCQ	CH	A	1
3	MCQ	CH	C	1
4	MCQ	CH	D	1
5	MCQ	CH	A	1
6	MCQ	CH	D	1
7	MCQ	CH	A	1
8	MCQ	CH	A	1
9	MCQ	CH	B	1
10	MCQ	CH	C	1
11	MCQ	CH	D	1
12	MCQ	CH	C	1
13	MCQ	CH	A	1

Q.No.	Type	Section	Key	Marks
14	MCQ	CH	C	1
15	MCQ	CH	B	1
16	MCQ	CH	D	1
17	MCQ	CH	D	1
18	MCQ	CH	B	1
19	MCQ	CH	A	1
20	MCQ	CH	B	1
21	MCQ	CH	D	1
22	NAT	CH	13.9 to 14.1	1
23	NAT	CH	0.19 to 0.21	1
24	NAT	CH	18.96 to 18.98	1
25	NAT	CH	0.009 to 0.011	1
26	MCQ	CH	D	2
27	MCQ	CH	A	2
28	MCQ	CH	B	2
29	MCQ	CH	C	2
30	MCQ	CH	A	2
31	MCQ	CH	B	2
32	MCQ	CH	C	2
33	MCQ	CH	B	2
34	NAT	CH	6.52 to 6.54	2
35	NAT	CH	0.24 to 0.26	2
36	NAT	CH	0.565 to 0.567	2

Q.No.	Type	Section	Key	Marks
37	NAT	CH	0.27 to 0.30	2
38	NAT	CH	0.9 to 1.1	2
39	NAT	CH	810 to 840	2
40	NAT	CH	17.5 to 18.5	2
41	NAT	CH	1990 to 2010	2
42	NAT	CH	900 to 905	2
43	NAT	CH	0.30 to 0.32	2
44	NAT	CH	799 to 801	2
45	NAT	CH	63 to 67	2
46	NAT	CH	850 to 860	2
47	NAT	CH	65 to 68	2
48	NAT	CH	131 to 138	2
49	NAT	CH	45.3 to 45.5	2
50	NAT	CH	7.9 to 8.1	2
51	NAT	CH	0.004 to 0.006	2
52	NAT	CH	1.6 to 1.8	2
53	NAT	CH	0.09 to 0.11	2
54	NAT	CH	8 to 8	2
55	NAT	CH	5 to 5	2